

User guide

BikeFlashBox BFX 1000



1. Description

The BikeFlashBox BFX 1000 sends optical signals by occurring events from devices that are paired with Bluetooth. Most common are smartphones and navigation systems. For example, voice announcements from a navigation system will send an optical signal and, therefore, you will not miss a turn. Incoming telephone calls or other messages from your smartphone will also be signaled through the blinking red LED. By using a compatible app also traffic warnings, such as "end of queue" or other important informations, will be signaled. It is possible to pair more the one device at the same time.

2. Technical Data

dimensions: 65 x 35 x 15 mm
 weight: 35g
 supply current max: 100mA
 supply voltage:..... 5 – 15 VDC
 cable length:appr. 60 cm
 connection:USB typ A
 compatibility: Android from 4, iOS
 display:..... 2 LED's, red + blue,
 depending on ambient light
 View angle of the red LED.....32°
 connectivity: Bluetooth 4.1 audio
 application: optoacoustic signal converter

3. Scope of delivery

- 1 x BFX 1000 with appr. 60cm cable
- 2 x cable straps, black, 280mm

4. Mounting

The device should be placed so that the middle LED is always in good sight. For fixing 2 cable straps are included. Alternative it can be fixed with screws or i.e. a double sided adhesive tape. Connect the USB connector with your supply voltage, if necessary use an adaptor.

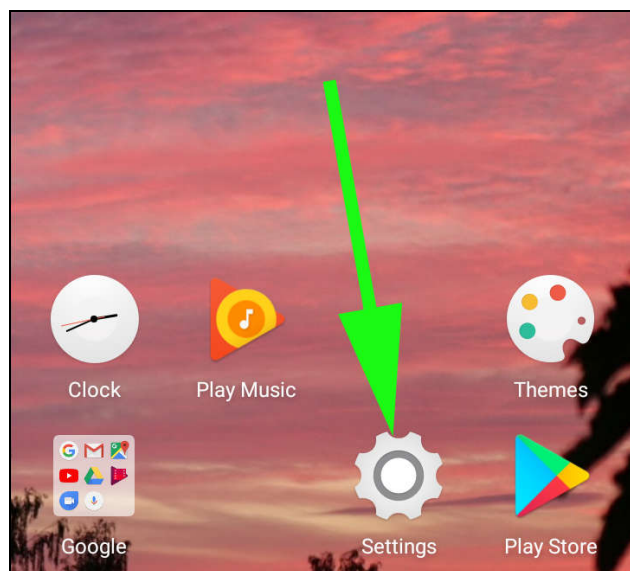
Important: make sure the supply voltage is not above 15V!

5. Operation

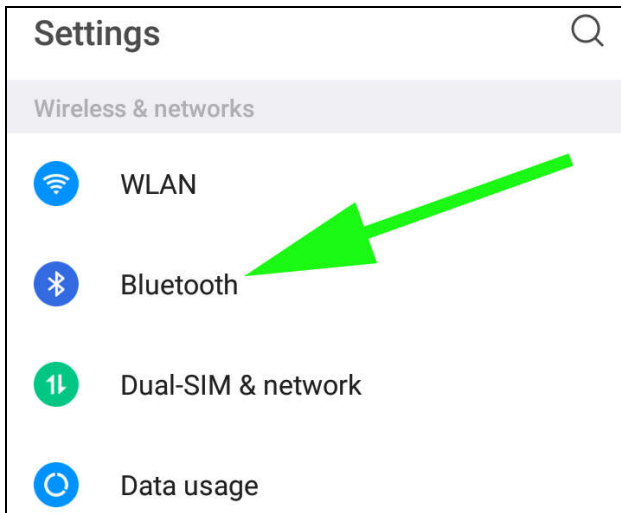
The handling of the pairing process can vary according to your unit. Our example shows the handling process with a smartphone running on Android operating system.

5.1 Pairing

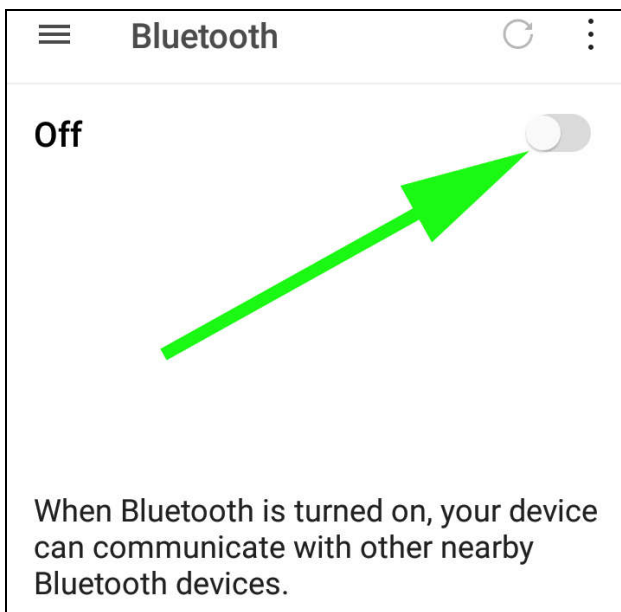
- connect the BFX 1000 USB connector with the supply voltage, the blue LED starts to blink
- activate Bluetooth on the smartphone:



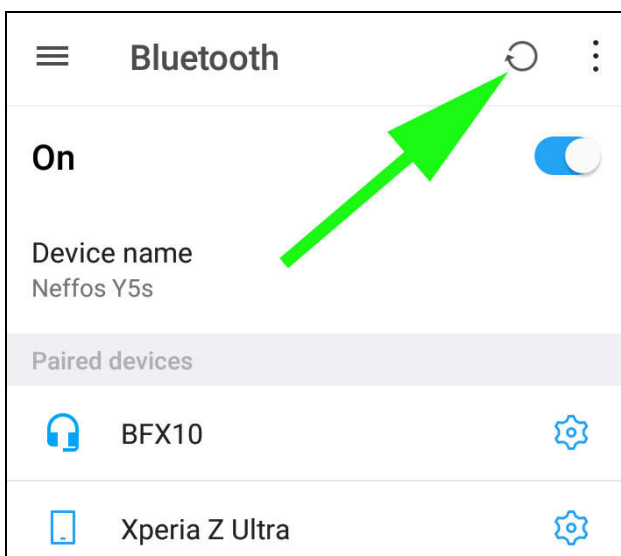
open settings



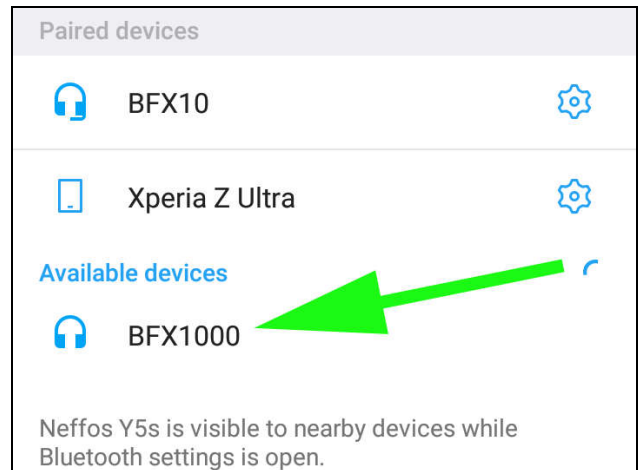
select Bluetooth



activate Bluetooth

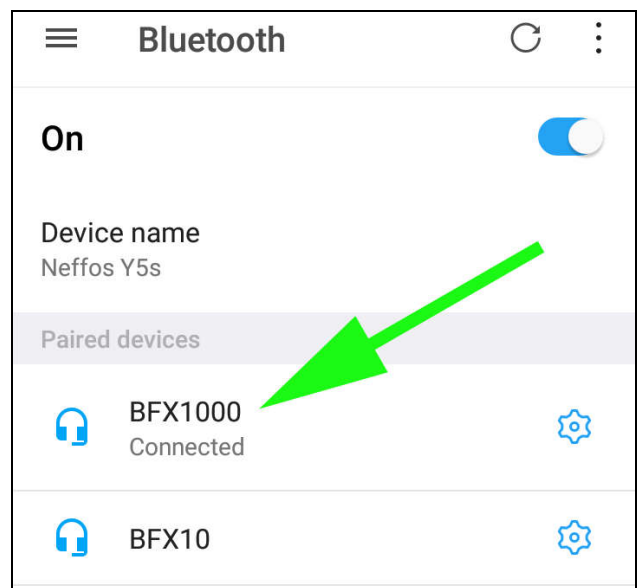


update display



select BFX 1000 to connect.

If the BFX 1000 does not show connected, please try again!



BFX 1000 is connected and ready for operation

- to couple with a navigation system, check the operating manual of the individual system.
- an automatical start of a certain app during the connecting process can for example be achieved by using the app "Bluetooth Autoplay".

5.2 Display



- 1: blue LED
- 2: red LED
- 3: ambient light sensor

blue LED is blinking:

unit is not connected, but ready for pairing or connection.

red LED is blinking fast:

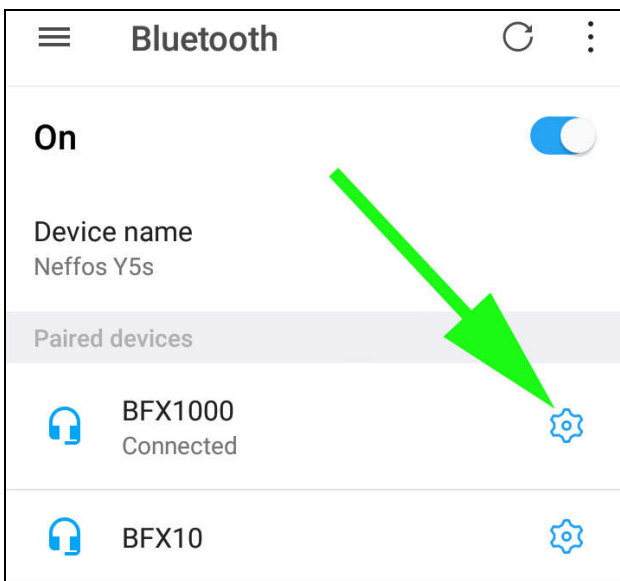
incoming message from the smartphone (WhatsApp / Instagram / Twitter ...)

red LED is blinking slow:

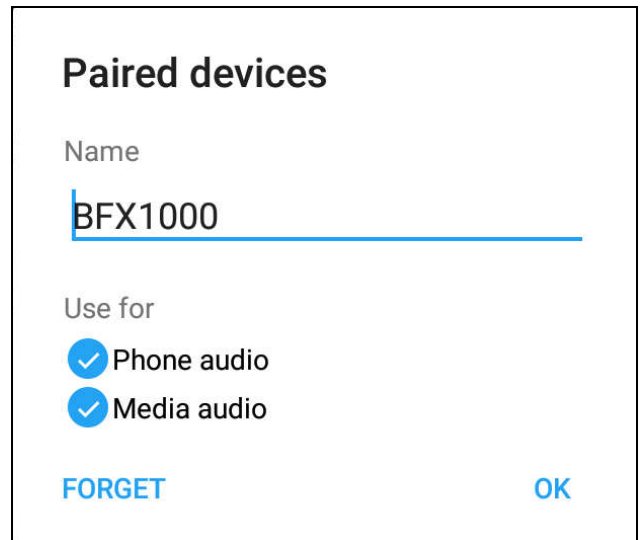
telephone call to the smartphone or message from the navigation system.

5.3 Select messages

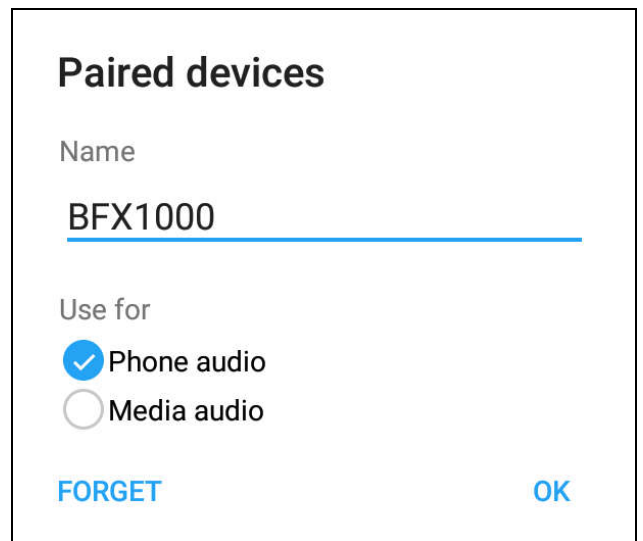
If you do not want to have all messages from your smartphone displayed, you can limit them:



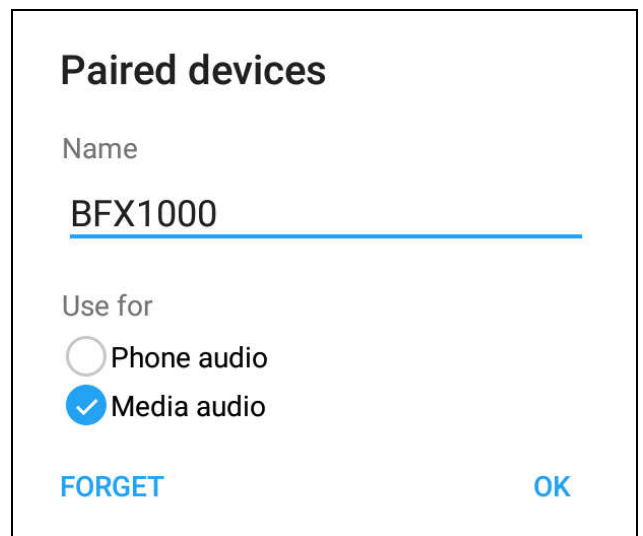
select BFX 1000



all incoming messages will be signaled



only telephone calls will be signaled



only messages from activated apps will be signaled